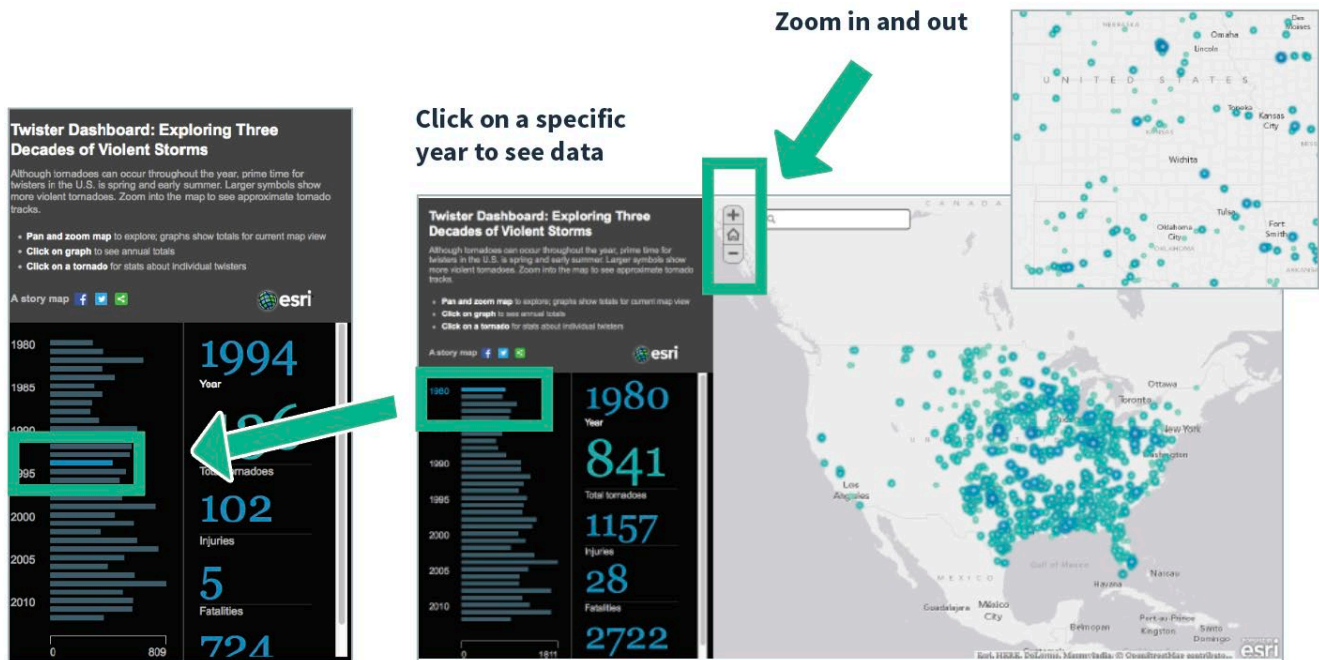




Interactive Story Map

Student Sheet A: Exploring Three Decades of Violent Storms

In this activity, you will investigate a Story Map of tornado data that was gathered over three decades to find answer questions. To navigate the map, you can pan and zoom, click on different sections of the graph, and click on specific regions and tornadoes in the map. Here are some examples of what you can do with the map:



Use the interactive Story Map to answer these questions:

STORY MAP ► <http://storymaps.esri.com/stories/2014/tornadoes/>

1. Make three observations about the pattern of tornadoes across the U.S.A.
 - 1)
 - 2)
 - 3)
2. Which regions have the most tornadoes?



Interactive Story Map

Student Sheet A: Exploring Three Decades of Violent Storms

3. Which regions have the least tornadoes?

4. What do we know about the geography of the United States that affects which areas are likely to have tornadoes?

5. How many tornadoes were reported in 1999?

6. In which years were the most tornadoes reported? Rank the top three years.
 - 1)
 - 2)
 - 3)

7. Which four cities in Nebraska had the highest number of tornadoes in the last three decades?
 - 1)
 - 2)
 - 3)
 - 4)

8. What direction are the tornadoes going in this image?
How do you know?

