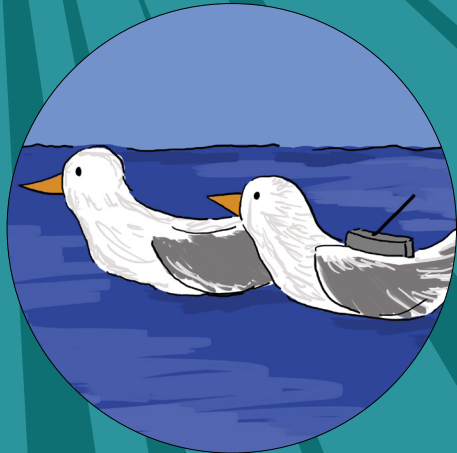
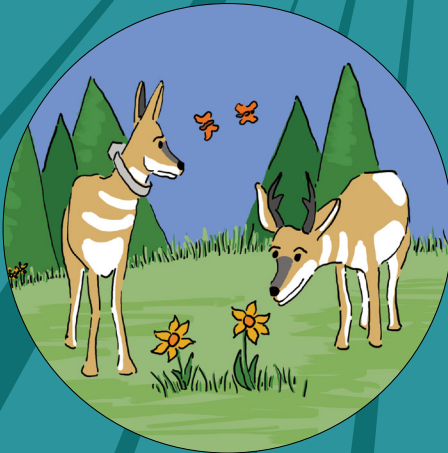
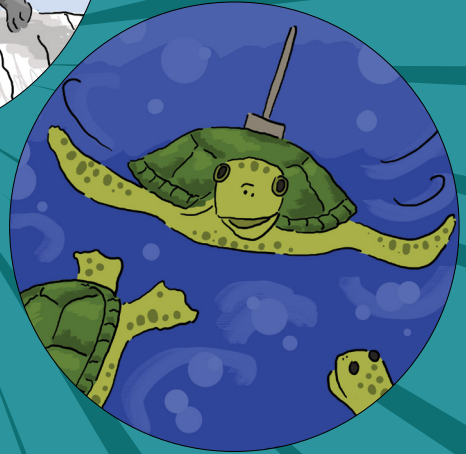
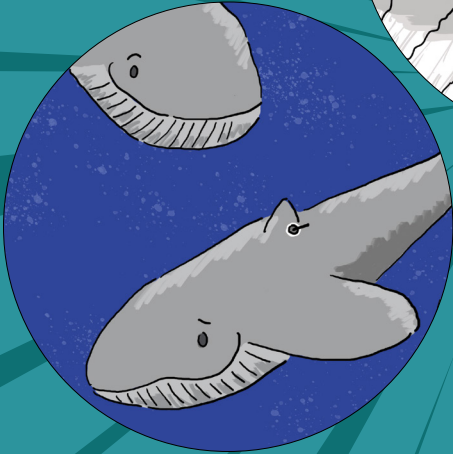


FOLLOW ME!

STORIES INSPIRED BY REAL ANIMALS
TRACKED FROM SPACE

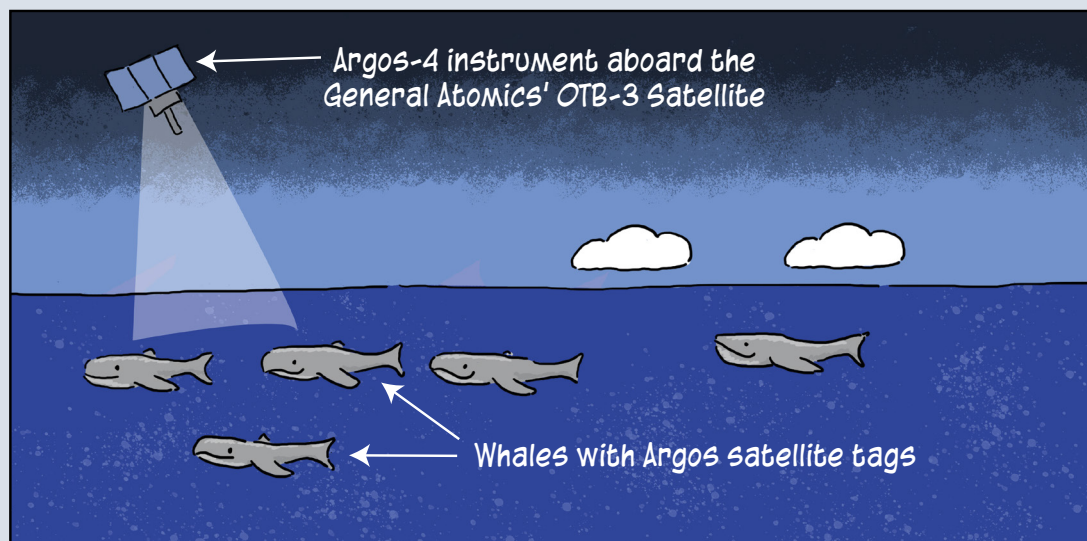


© 2022 UCAR

FOLLOW ME!

STORIES INSPIRED BY REAL
ANIMALS TRACKED FROM SPACE

By
Lisa S. Gardiner
UCAR Center for Science Education



This comic book is based on research projects using Argos satellites tags to follow animals around the world and learn what they do, where they go, and how we can help keep them safe.



TABLE OF CONTENTS

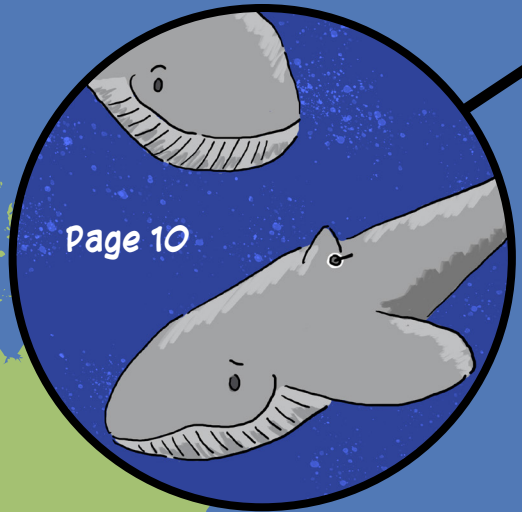
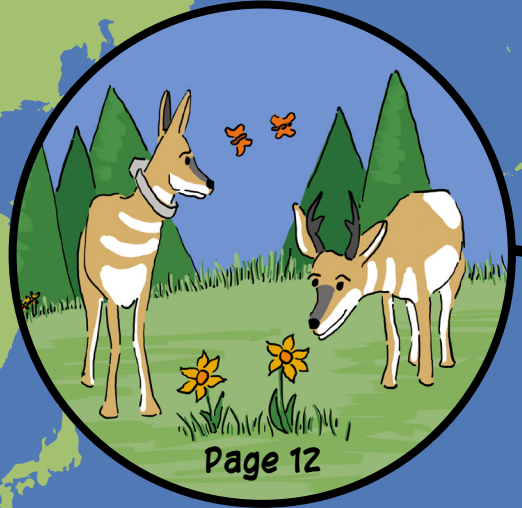
...
A TURTLE TALE
Page 4

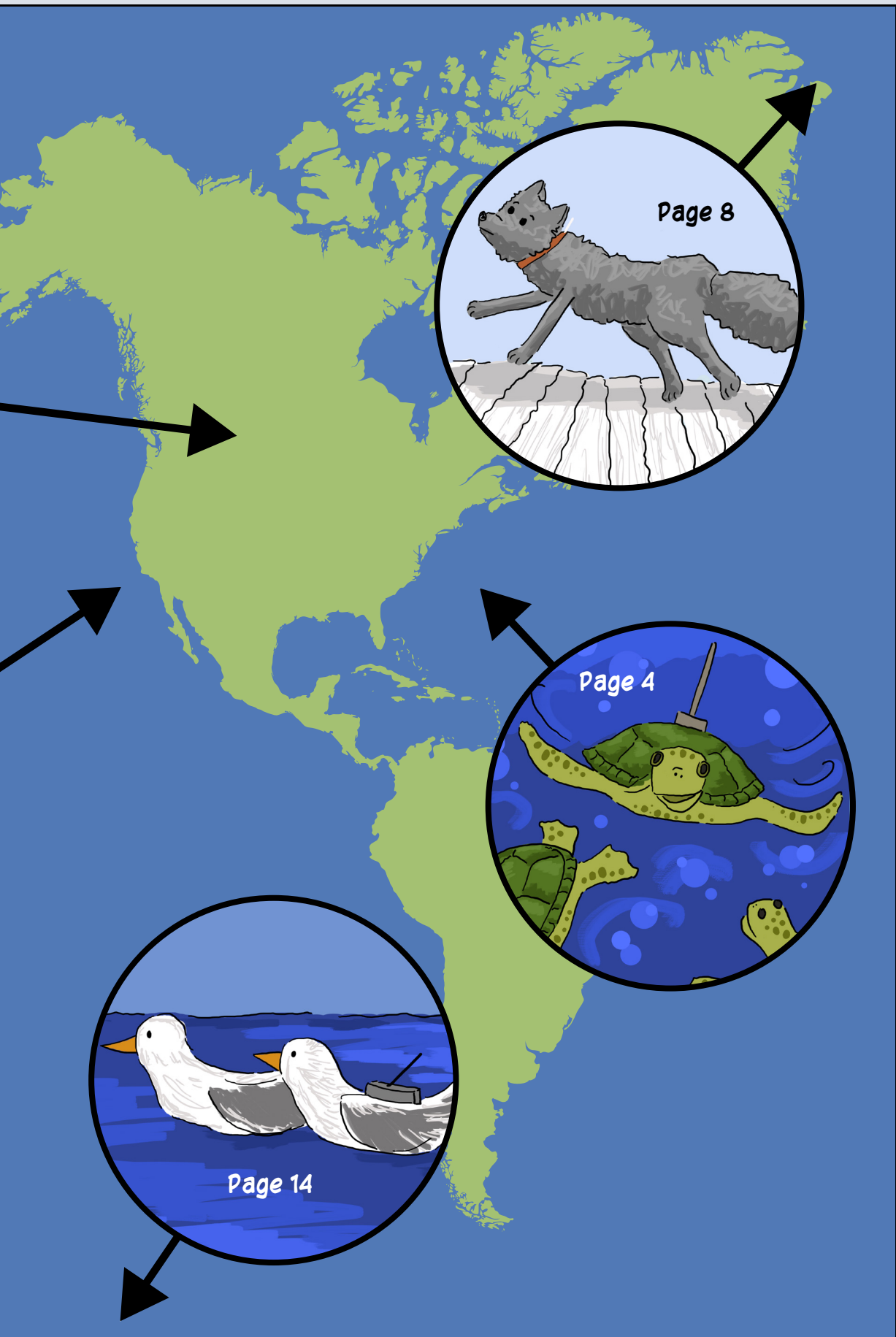
...
**FOX ON A VERY
LONG WALK**
Page 8

...
**THE MOST
WHALEY
PARTS OF THE
OCEAN**
Page 10

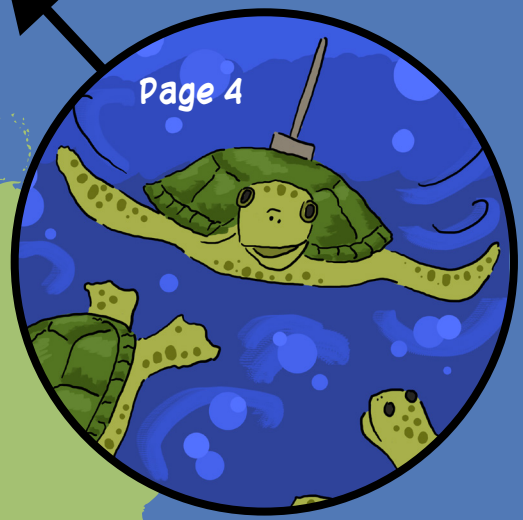
...
**WHERE THE
PRONGHORN
ROAM**
Page 12

...
**THE
ALBATROSS
SPIES**
Page 14





Page 8



Page 4

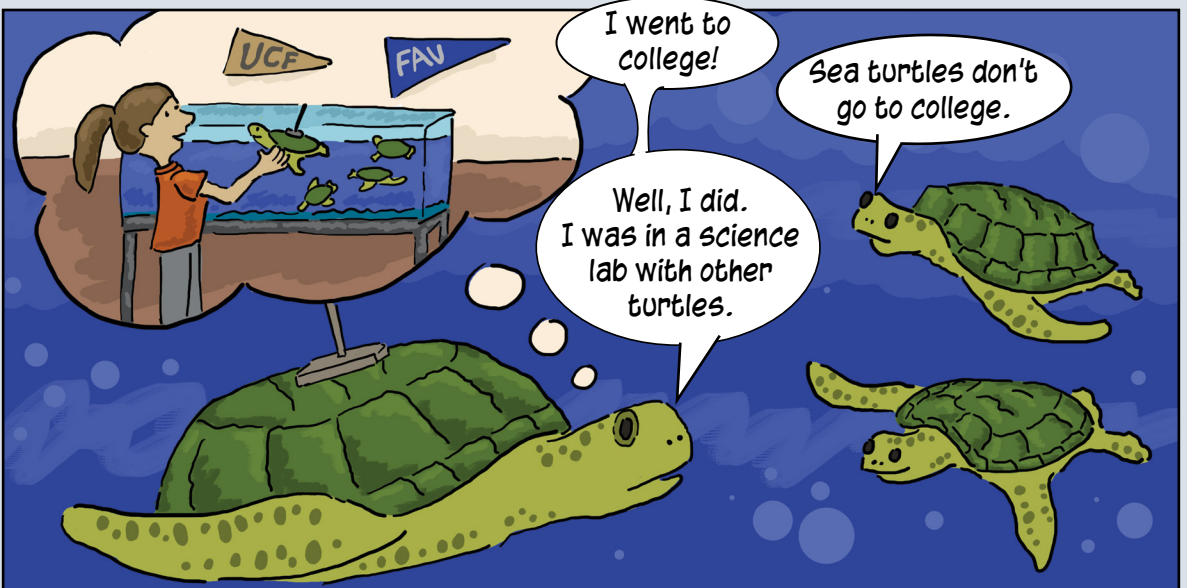
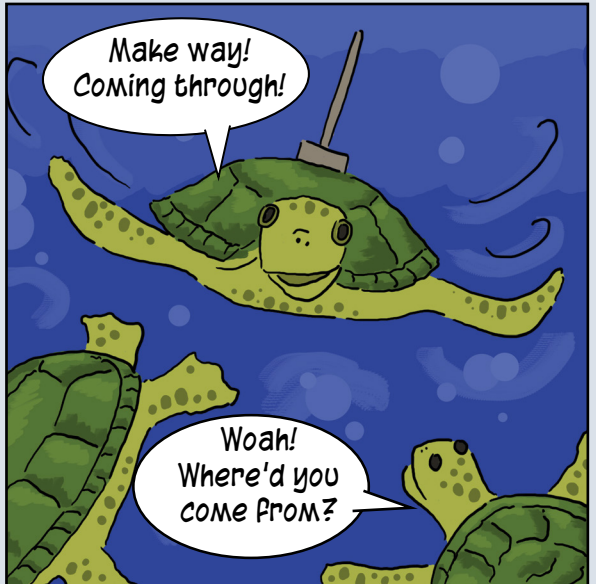
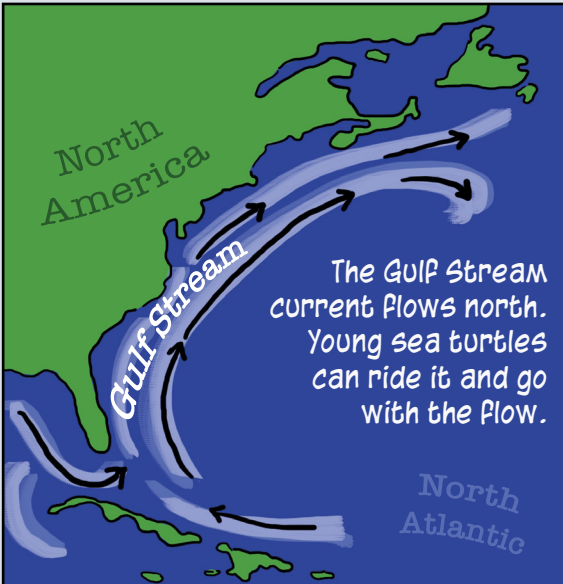
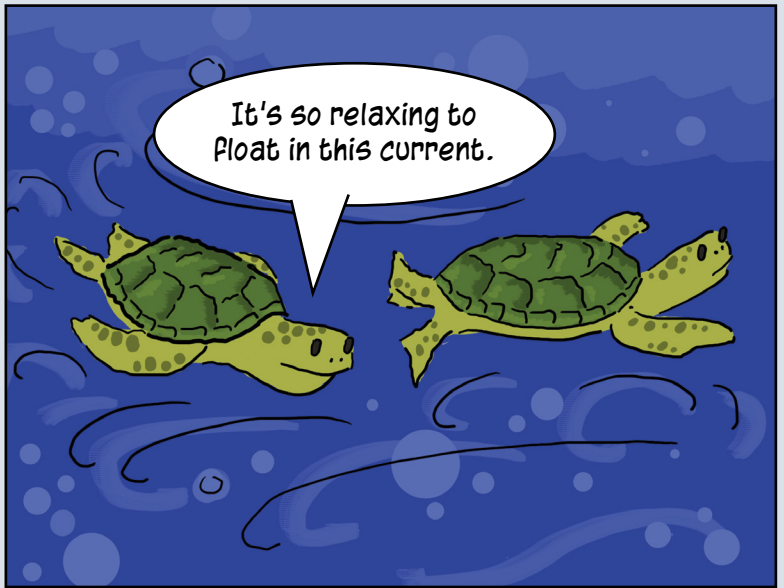


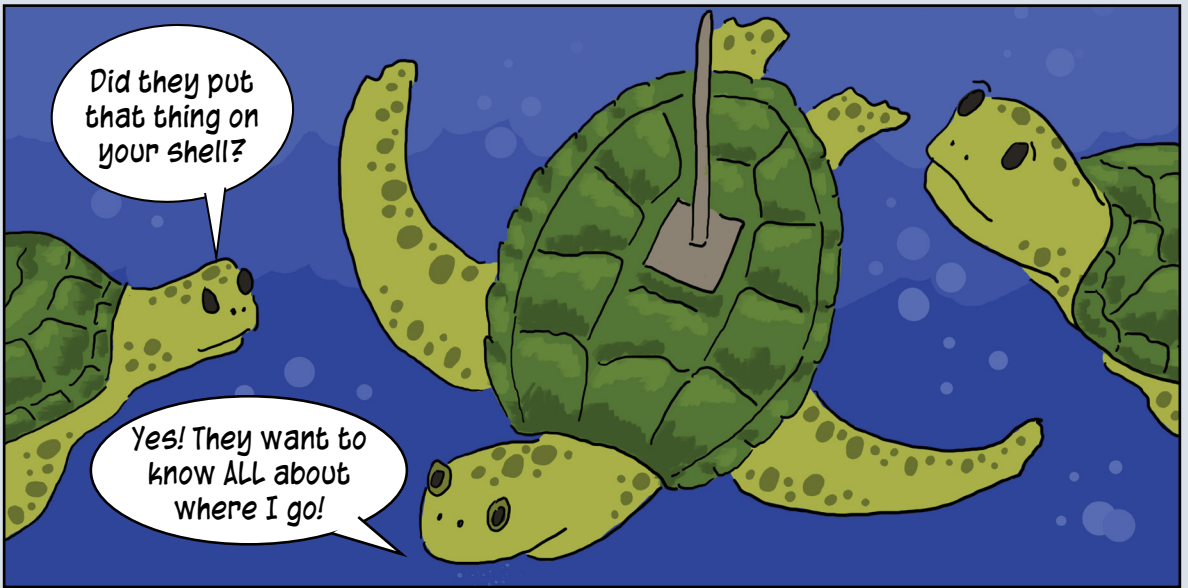
Page 14

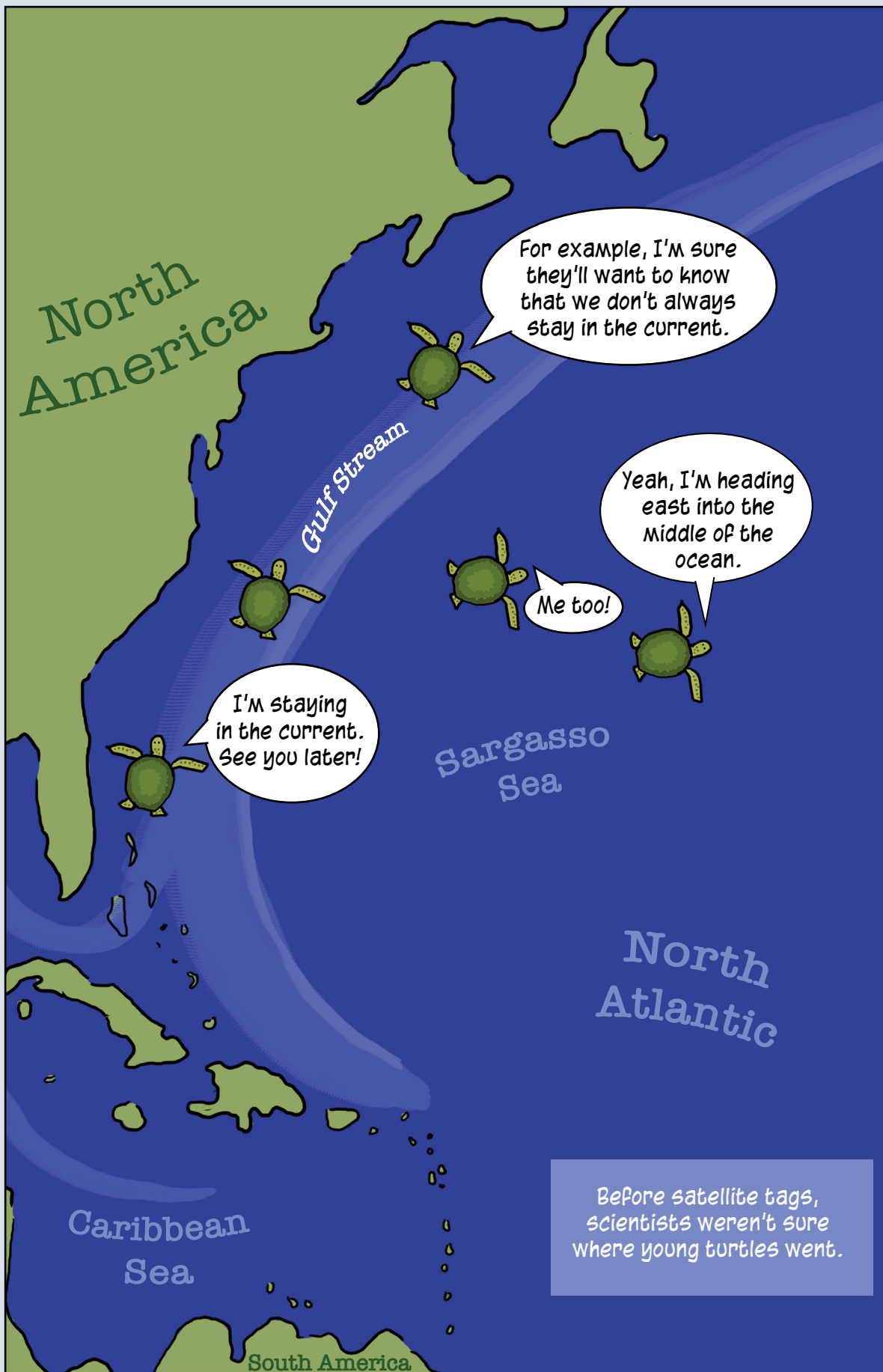
A TURTLE TALE

Species:
Green Sea Turtle

Location:
North Atlantic







North America

Gulf Stream

For example, I'm sure they'll want to know that we don't always stay in the current.

Yeah, I'm heading east into the middle of the ocean.

Me too!

I'm staying in the current. See you later!

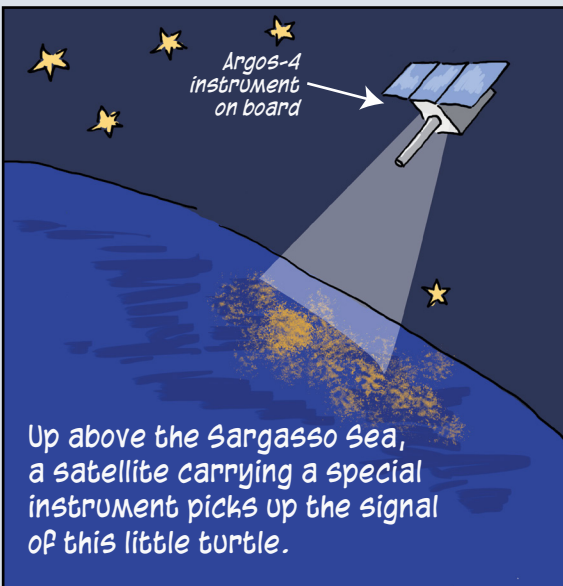
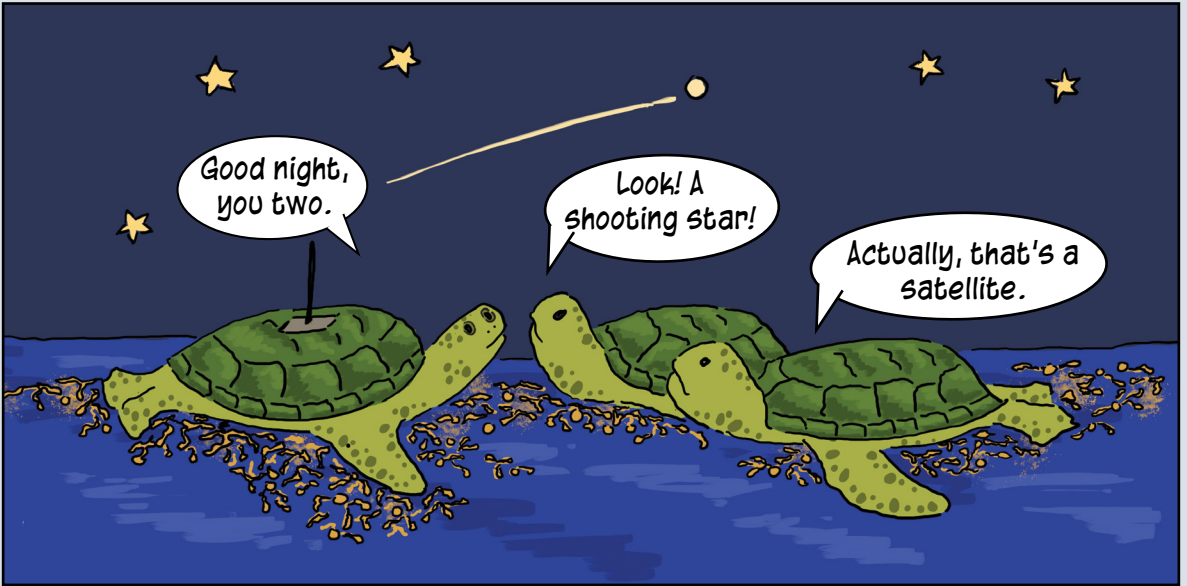
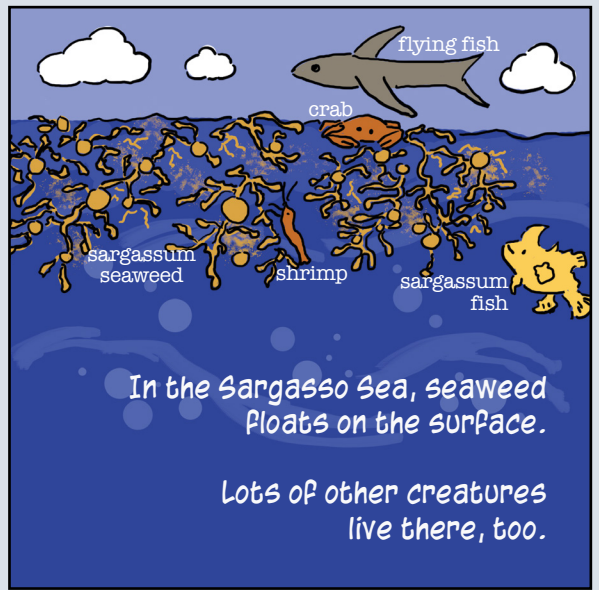
Sargasso Sea

North Atlantic

Caribbean Sea

Before satellite tags, scientists weren't sure where young turtles went.

South America



It's not only turtles that are tracked from space...

FOX ON A VERY LONG WALK

Species:
Arctic Fox

Location:
Arctic

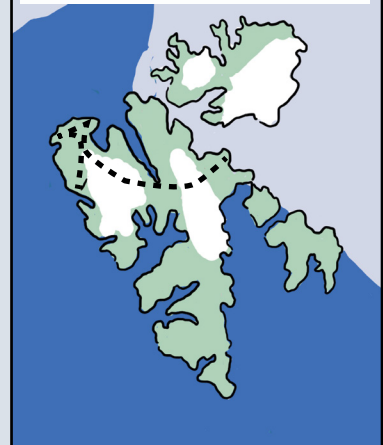
I want to
explore the world.

How are you
going to do that?

Arctic Foxes with gray winter coats are *blue morphs*.
Those with white winter coats are *white morphs*.



The fox walked across her island and thought about how to explore the world.



She got to
the coast
and realized...

Wait a minute!
I can walk on THAT water.
It's frozen!

Sea ice is frozen
seawater that floats
on the ocean surface.

She started her trip across the ice in late March when the Sun was low in the sky.

My long shadow is the only friend I have out here.

She found a hole in the sea ice where she could catch and eat fish.

MMMMM!
Food!

There's no food here. I'll run as fast as I can.

She crossed the Greenland ice sheet.

A blizzard forced her to stop for a few days.

My shadow is getting short. And plants are growing. Is it summer? How long have I been wandering?

Her journey in the Arctic lasted more than 3 months.

Finally, she found her new home.

Welcome!

Another island? I walked from one island to another.

ELLESMERE ISLAND
NUNAVUT
CANADA

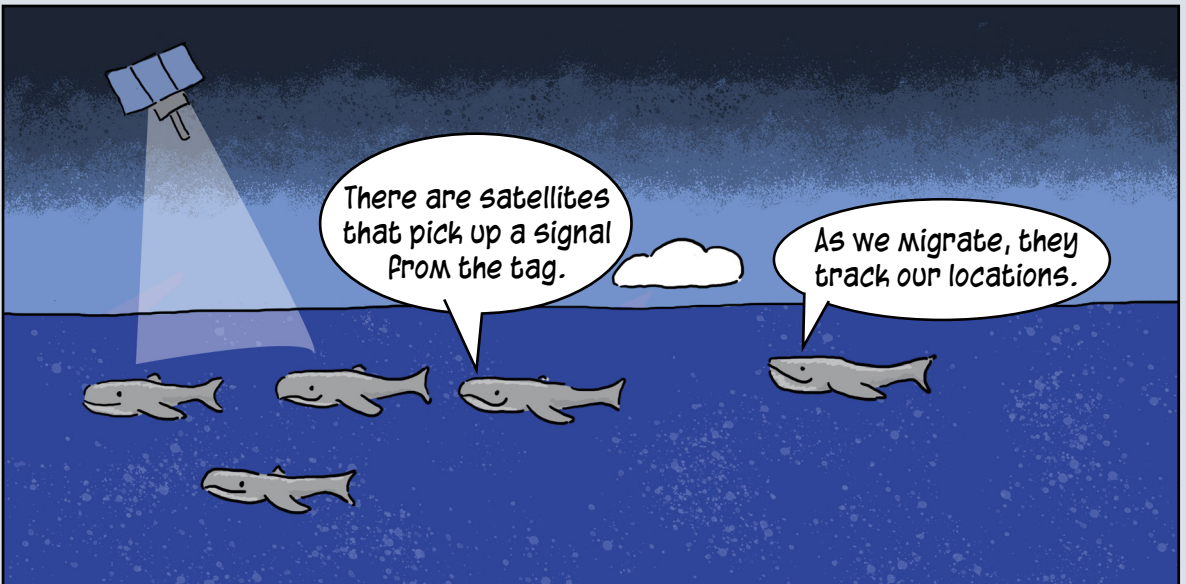
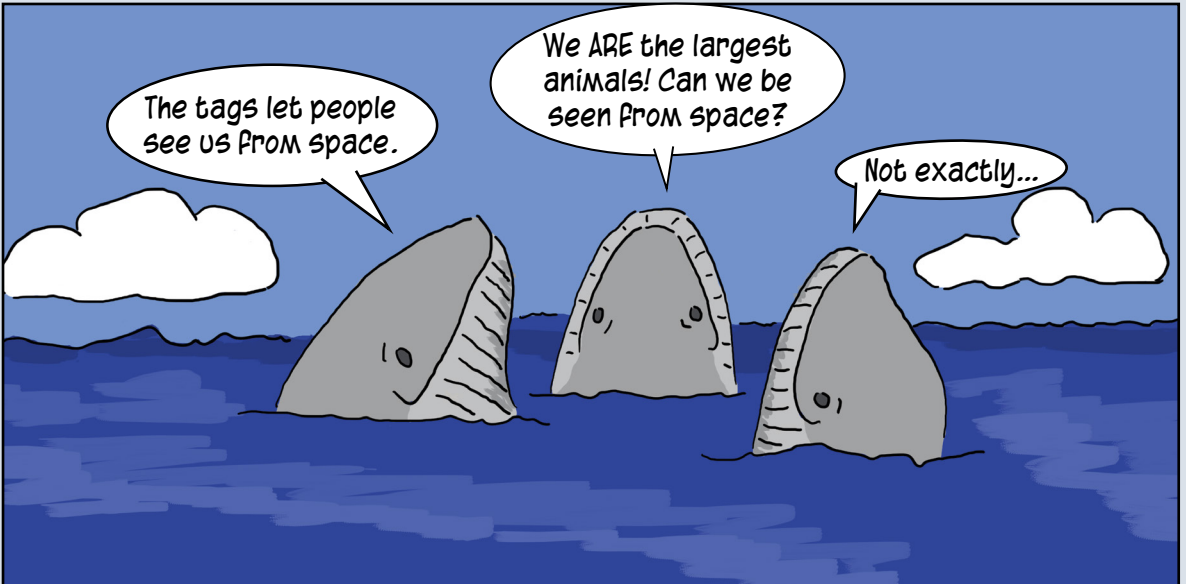
THE MOST WHALEY PARTS OF THE OCEAN

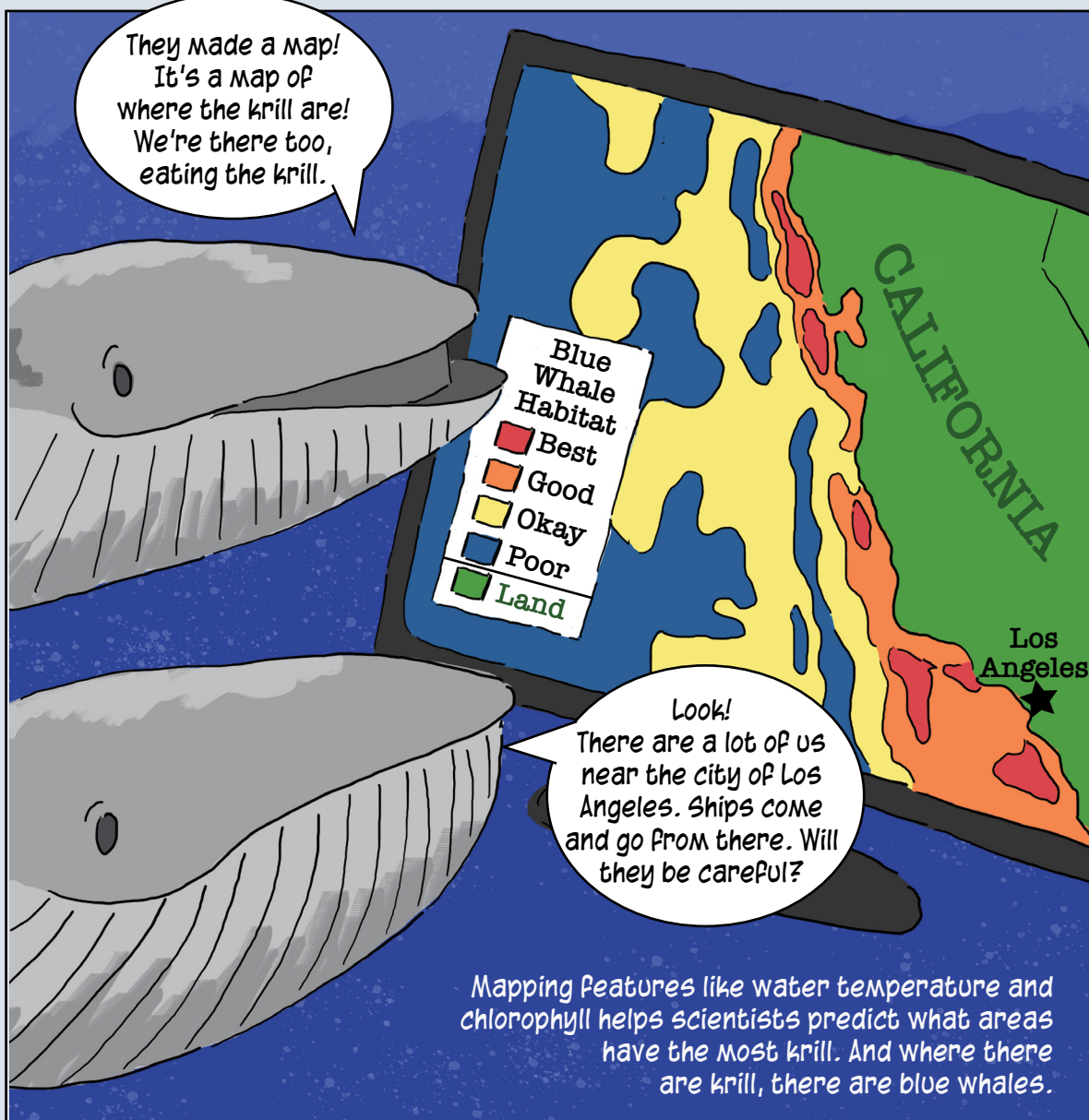
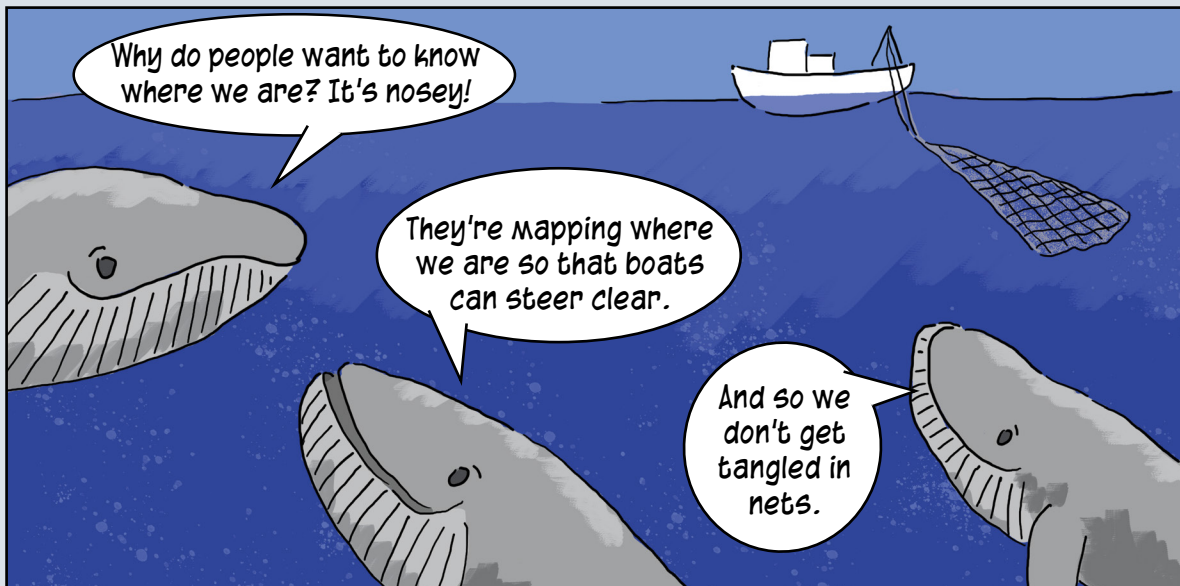
Species: Blue Whale
Location: East Pacific

What? Where?
I can't see
back there.

Dude, what's that thing
near your dorsal fin?

It's a
tracking tag.
I've got one
too.





WHERE THE PRONGHORN ROAM

Species: Pronghorn

Location: North America

Ahhh, spring. It's that time of year again.

Yes, time to migrate!

Lots of pronghorn are migrating from Montana, United States, to Saskatchewan and Alberta, Canada.

ALBERTA

Come over here!

SASKATCHEWAN

CANADA

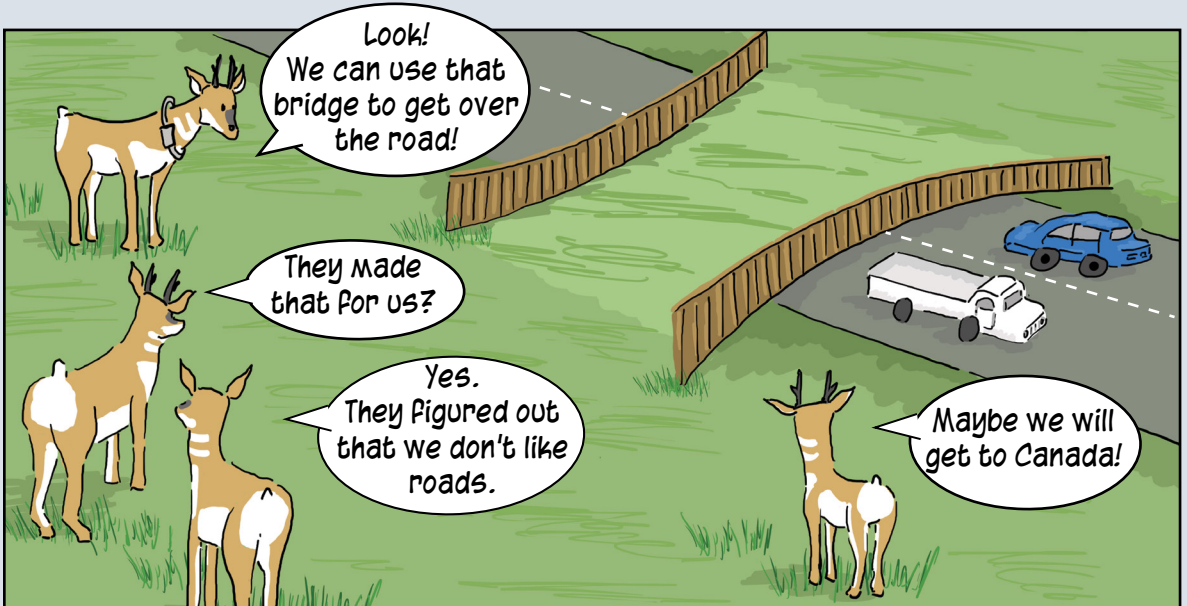
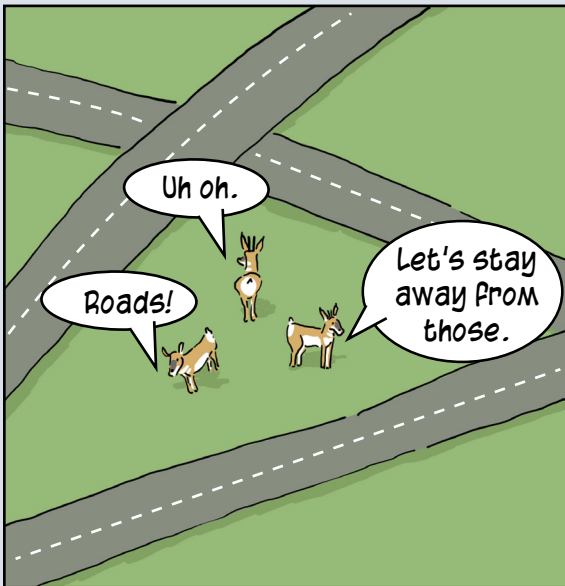
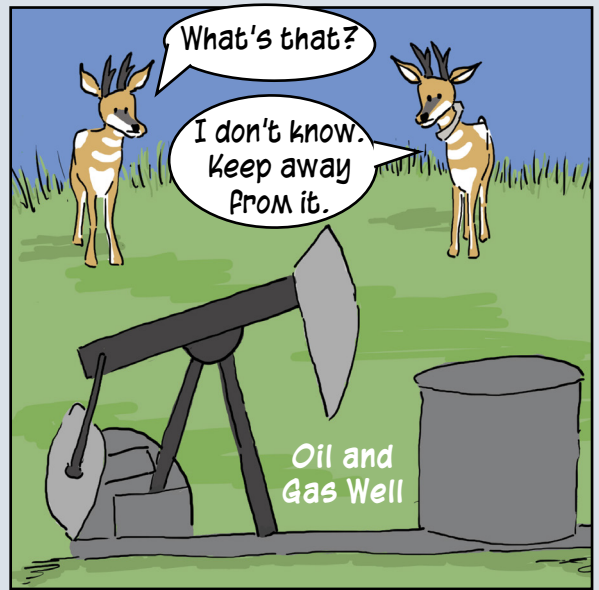
UNITED STATES

We're on our way!

I'm staying put.

See you later!

Not all pronghorn migrate.

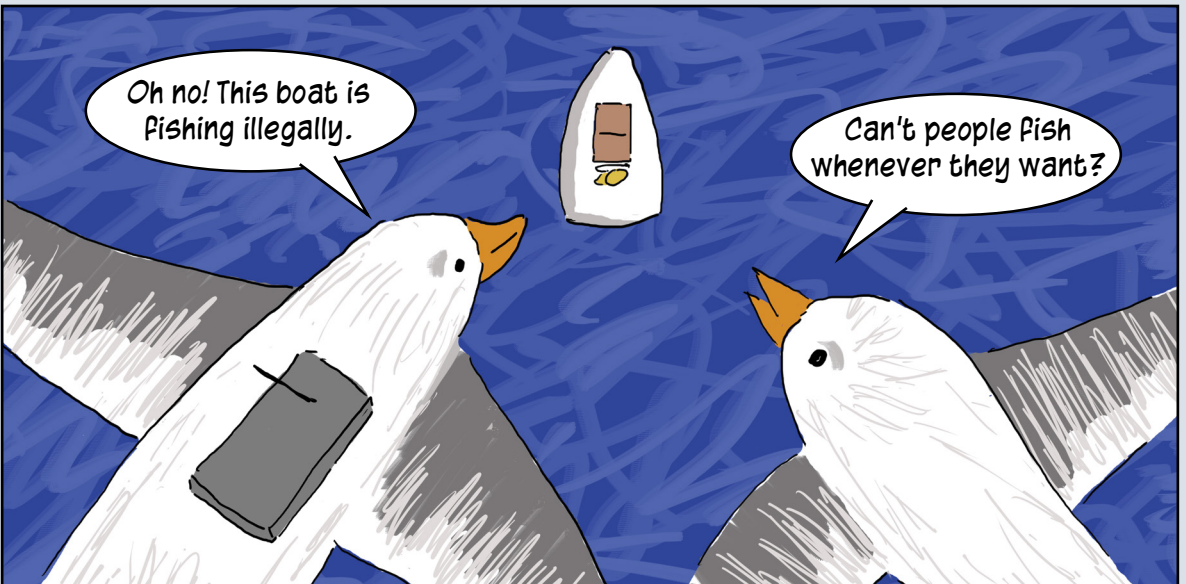


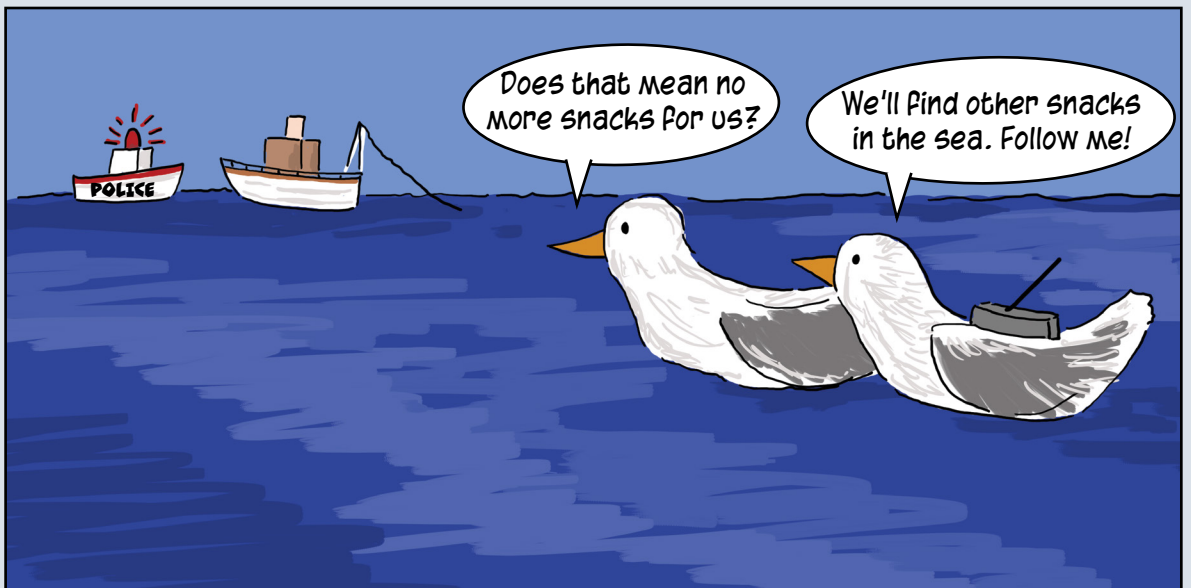
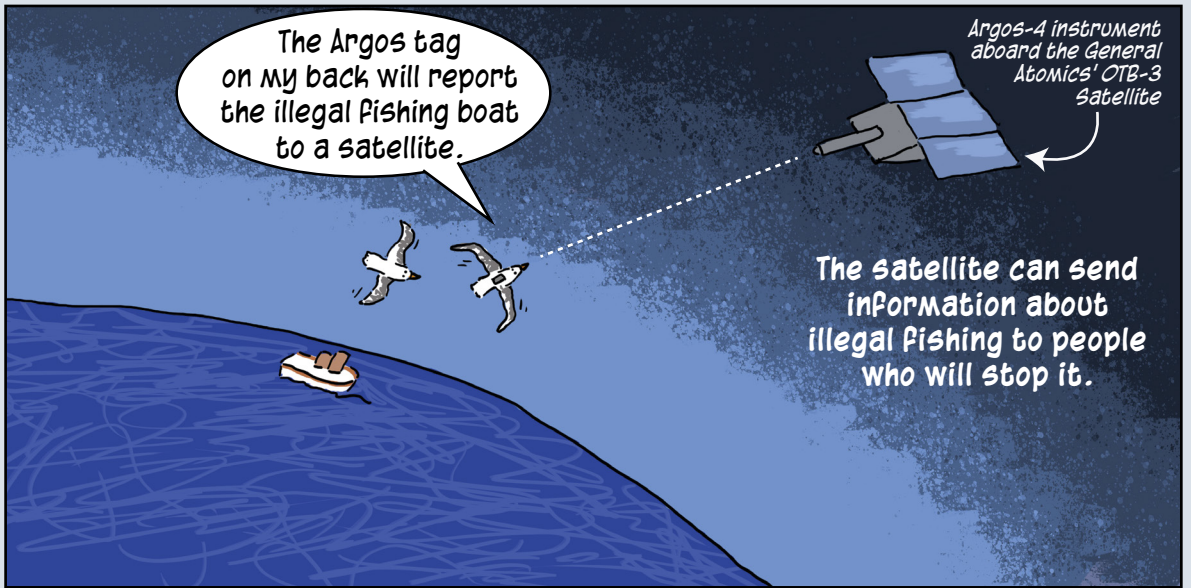
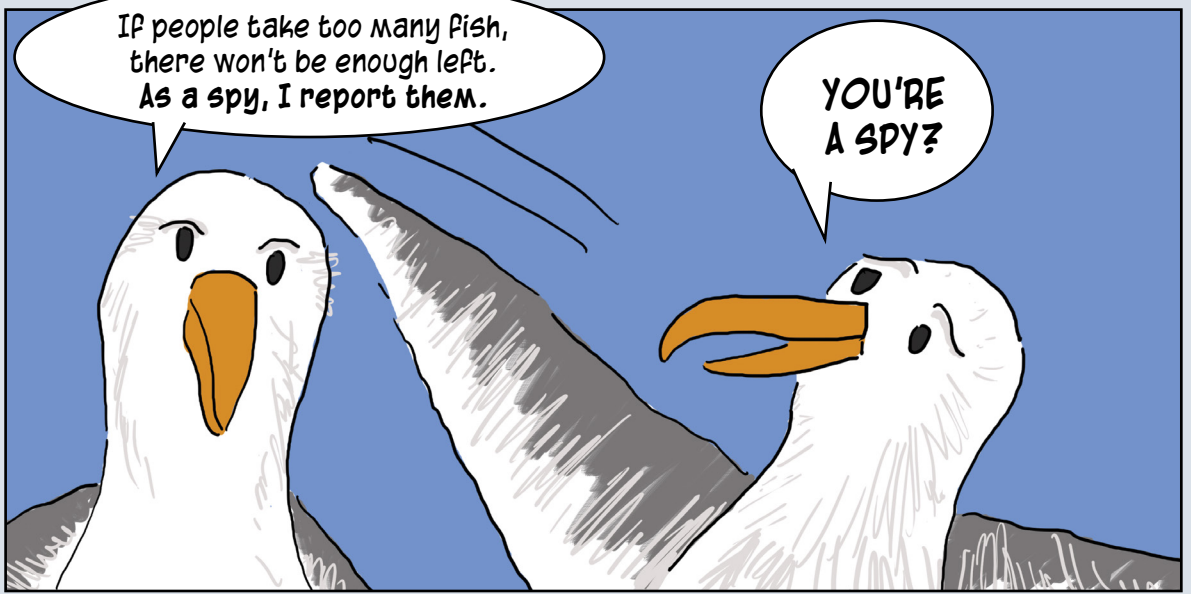
THE ALBATROSS SPIES

Species:
Great Albatross

Location:
Above the Southern
Ocean

Southern Ocean





ABOUT



UCAR CENTER FOR
SCIENCE EDUCATION

This comic book was developed at the UCAR Center for Science Education as an outreach effort of Argos, a system of instruments aboard satellites used to track tagged animals around the world and help understand other aspects of our planet.



Learn more about how Argos tracking has helped us learn about the animals profiled in this comic book.

Green Sea Turtles

argos-system.org/young-green-turtles-into-sargasso-sea

Arctic Foxes

argos-system.org/long-travel-of-arctic-fox-from-svalbard-to-canada

Blue Whales

fisheries.noaa.gov/west-coast/marine-mammal-protection/whalewatch

Pronghorn

argos-system.org/pronghorn-migrations

Albatross

argos-system.org/albatrosses-detect-illegal-fishing-boats



NOAA and CNES have been partners in the Argos data collection system since 1978. For NOAA's latest contribution to the Argos system, NOAA has partnered with CNES to host their Argos-4 instrument aboard a commercial satellite. NOAA is working with USSF to utilize their hosted payload solutions contract and selected General Atomics and their Orbital Ted Bed-3 satellite to host the Argos-4 instrument.

CREDITS

Created by: Lisa S. Gardiner

Copyedit: Melissa Rummel

Argos reviewers: Kimberly Eaves, Scott Rogerson, Hudson Delee, and David Jacob

UCAR Center for Science Education Argos team:

Lisa S. Gardiner, Melissa Rummel, Emily Snode-Brennenman, and Emma Hagan

Thanks to the scientists and projects whose research inspired these stories.

Green Sea Turtles:

Katherine L. Mansfield (University of Central Florida),
Jeanette Wyneken (Florida Atlantic University),
Jiangang Luo (University of Miami)

Arctic Foxes:

Eva Fuglei (Norwegian Polar Institute) and Arnaud Tarroux (Norwegian Institute for Nature Research)

Blue Whales:

Helen Bailey (University of Maryland Center for Environmental Science) and researchers working with NOAA's Whale Watch Program

Pronghorn:

Andrew F. Jake (National Wildlife Federation), Nicholas J. DeCesare (Montana Fish, Wildlife, and Parks), Paul F. Jones (Alberta Conservation Association), C. Cormack Gates (University of Calgary), Scott J. Story (Montana Fish, Wildlife, and Parks), Sarah K. Olimb (World Wildlife Fund), Kyran E. Kunkel (World Wildlife Fund), and Mark Hebblewhite (University of Montana)

Albatrosses:

The Ocean Sentinel Project

The Fictional animals in *Follow Me!* do the same sorts of things as real animals tracked using Argos satellite tags.

Read the comic and find out...

where young sea turtles go,



how an arctic fox walked from Norway to Canada,

what parts of the ocean have the most blue whales,



what pronghorn avoid as they migrate,

and how albatross help catch illegal fishing boats.



LEARN MORE ABOUT ARGOS!

Visit Argos online
argos-system.org

Argos Classroom Activities and Outreach
nesdis.noaa.gov/argos

Watch Argos-4: Tracking From Space
youtu.be/aBC_MeKRMNC



Follow Me! was developed at the UCAR Center for Science Education as an outreach effort of the Argos program under award NA21OAR4310383 from the National Oceanic and Atmospheric Administration (NOAA), U.S. Department of Commerce. The statements, findings, conclusions, and recommendations are those of the author(s) and do not necessarily reflect the views of NOAA or the U.S. Department of Commerce.