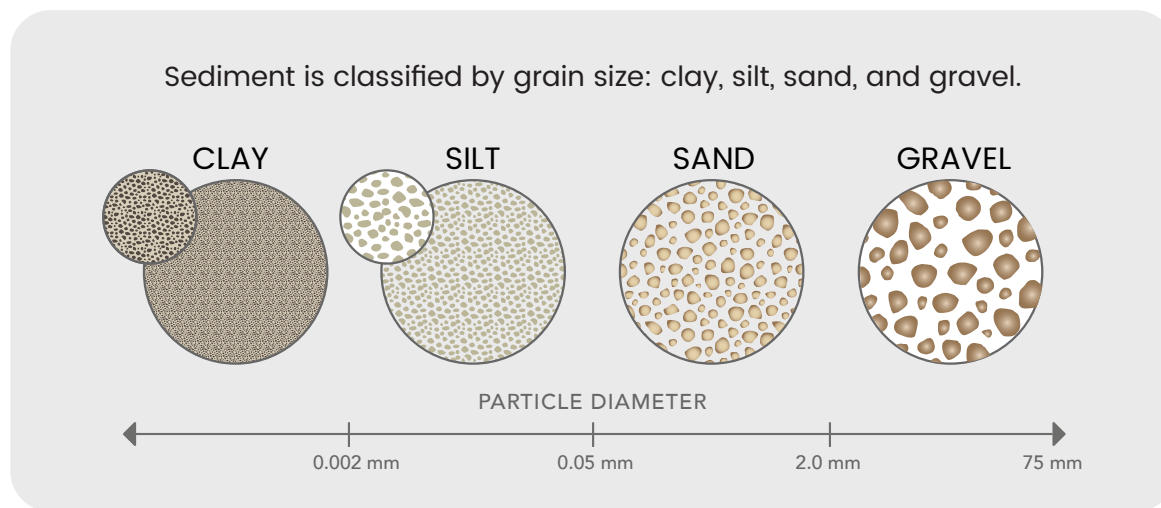


# DUST *on the* MOVE

- 1 Compare the samples to see which type of sediment is most like the dust.

*How small are grains of dust?*

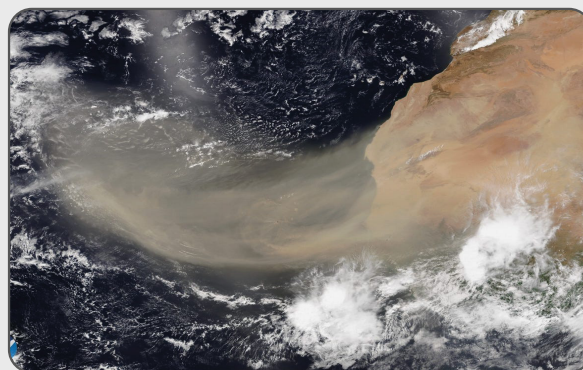


- 2 Use the wind box to test which type of sediment can be carried by wind.

*Which grain sizes can be carried by wind?*

\* **CHALLENGE:** Try to blow all of the sediment out of the green circle.

- i Dust is made of tiny pieces of rock that are light enough to be carried by the wind.



A satellite image of dust blowing into the Atlantic Ocean from the Sahara Desert in Northern Africa